



NOTIFICATION OF PROPOSED RESEARCH CRUISE

PART A: GENERAL

1. NAME OF RESEARCH SHIP: "Johan Hjort"      CRUISE NO. 2016205
  
2. DATES OF CRUISE      From: May 2, 2016      To: June 8, 2016
  
3. OPERATING AUTHORITY:      Institute of Marine Research  
P.O.Box 1870 Nordnes  
N-5817 BERGEN NORWAY  
  
TELEPHONE:      47-55238500  
TELEFAX :      47-55238531  
TELEX:      42297 OCEAN N
  
4. OWNER (if different from no. 3)
  
5. PARTICULARS OF SHIP:      Name: "Johan Hjort"  
  
Nationality: Norwegian  
  
Overall length: 64.5 metres  
  
Maximum draught: 6.4 metres  
  
Net tonnage: 548 tonnes  
  
Propulsion: Diesel  
  
Call sign: LDGJ  
  
Registration port and number  
(if registered fishing vessel)  
Bergen  
Telephone:      +47 55906400  
Telefax::      +47 55906401  
E-mail:      johan.hjort@IMR.no
  
6. CREW      Name of master: John Gerhard Aasen / Tommy Steffensen  
  
Number of crew: 15



**ICES-Søknadskjema**

7. SCIENTIFIC PERSONNEL

Name and address of  
scientist in charge:

Åge Høines  
Institute of Marine Research  
P.O. Box 1870 Nordnes  
N-5817 BERGEN NORWAY

Tel/telex/fax no.: +47 55238500/+47 55238687

No. of scientists: 10

8. GEOGRAPHICAL AREA IN WHICH SHIP WILL OPERATE (with reference to latitude and longitude)

Area of operation is the Norwegian Sea, including work inside the Icelandic EEZ.

62°N-72°N  
12°W-20°E

9. BRIEF DESCRIPTION OF PURPOSE OF CRUISE

- 1) Acoustic assessment of the herring and blue whiting spawning stock. The cruise is part of the international survey in the Nordic Seas coordinated through the ICES Working Group of International Pelagic Surveys with participants from the Faroes, Iceland, EU (Denmark) and Russia.
- 2) Observations on hydrography and plankton.

10. DATES AND NAMES OF INTENDED PORTS OF CALL

11. ANY SPECIAL REQUIREMENTS AT PORTS OF CALL

No



NOTIFICATION OF PROPOSED RESEARCH CRUISE

PART B: DETAIL

- 1. NAME OF RESEARCH SHIP: "Johan Hjort" CRUISE NO. 2016205
- 2. DATES OF CRUISE From 2 May 2016 To 8 June 2016

3. a) PURPOSE OF RESEARCH

The main purpose of the cruise is the assessment of the herring and blue whiting, i.e. stock size and distribution using acoustic methods combined with sampling with pelagic trawls. The cruise is part of an international coordinated survey with vessels from the Faroes, Iceland, EU (Denmark), Norway, and Russia participating. Information on other species such as argentines, mackerel and red fish is collected upon encounter. The survey is coordinated by ICES Working Group of International Pelagic Surveys. The overarching plan of the survey is available in the web ([http://www.ices.dk/sites/pub/PublicationReports/Expert Group Report/SSGIEOM/2015/WGIPS15.pdf](http://www.ices.dk/sites/pub/PublicationReports/Expert%20Group%20Report/SSGIEOM/2015/WGIPS15.pdf)).

Hydrographic investigations by use of CTD sonde, and plankton investigations using plankton nets

b) GENERAL OPERATIONAL METHODS (including full description of any fish gear, trawl type, mesh size, etc.)

Echo sounding and pelagic trawling, CTD and plankton nets.

- 4. ATTACH CHART showing (on an appropriate scale) the geographical area of intended work, positions of intended stations, tracks of survey lines, positions of moored/seabed equipment, areas to be fished

5. a) TYPES OF SAMPLES REQUIRED (e.g., geological/water/plankton/fish/radionuclide).

Fish, plankton and water.

b) METHODS OF OBTAINING SAMPLES (e.g., dredging/coring/drilling/fishing, etc. When using fishing gear, indicate fish stocks being worked, quantity of each species required, and quantity of fish to be retained on board

Fishing with pelagic trawl on acoustic registrations, of which approx. 100 individuals/haul of the target species are required. Plankton and hydrographic samples on pre-defined stations

6. DETAILS OF MOORED EQUIPMENT

<u>Dates</u>		<u>Description</u>	<u>Depth</u>	<u>Latitude</u>	<u>Longitude</u>
<u>Laying</u>	<u>Recovery</u>				

- 7. ANY HAZARDOUS MATERIALS (chemicals/explosives/gases/radioactives, etc. (Use separate sheet if necessary)

	None
a) <u>Type and trade name</u>	NIL
b) <u>Chemical content</u> (and formula)	NIL
c) <u>IMO IMDG code</u> (reference and UN no.)	NIL
d) <u>Quantity and method of storage on board</u>	NIL



e) If explosives give date(s) of detonation NIL

- Method of detonation
- Position of detonation
- Frequency of detonation
- Depth of detonation
- Size of explosive charge in kg.

8. DETAIL AND REFERENCE OF

a) Any relevant previous/future cruises

Conducted since 2000 and a similar cruise for spring 2017 is planned.

b) Any previously published research data relating to the proposed cruise

*Report of the Working Group of International Pelagic Surveys (WGIPS) ICES CM 2015/SSGIEOM Ref. SCICOM, ACOM, WGISUR, WGWIDE, & HAWG ICES, Copenhagen.*

Available at [http://www.ices.dk/sites/pub/Publication Reports/Expert Group Report/SSGIEOM/2015/WGIPS15.pdf](http://www.ices.dk/sites/pub/Publication%20Reports/Expert%20Group%20Report/SSGIEOM/2015/WGIPS15.pdf)

9. NAMES AND ADDRESSES OF SCIENTISTS OF THE COASTAL STATE(S) IN WHOSE WATERS THE PROPOSED CRUISE TAKES PLACE WITH WHOM PREVIOUS CONTACT HAS BEEN MADE

(See add. sheet)

10. STATE

a) Whether visits to the ship in port by scientists of the coastal state concerned will be acceptable (Yes/No)

Yes

b) Participation of an observer from the coastal state for any part of the cruise together with the dates and the ports for embarkation and disembarkation

Acceptable. Dates and ports to be closer settled if wanted by the coastal state.

c) When research data from the intended cruise is likely to be made available to the coastal state and by what means

End of June 2016, as cruise report (one report for the international survey). The results will be summarized in a post cruise meeting and reported to the ICES Working Group for International Pelagic surveys.



## ICES-Søknadskjema

## PART C. SCIENTIFIC EQUIPMENT

Complete the following table  
using a separate page for  
each coastal state

Coastal state: Iceland

Port call:

Indicate "YES or "NO"

Dates: 2 May-8 June 2016

List scientific work by function				Distance from coast		
				Within 4 nm	Between 4-12nm	Between 12 and 200 nm
e.g. Magnetometry Gravity Diving Seismics Seabed sampling Bathymetry Trawling Echo sounding Water sampling U/W TV Moored instr. Towed instr.	Water column including sediment sampling of the seabed	Fisheries research within fishing limits	Research concerning the natural resources of the continental shelf or its physical characteristics	Within 4 nm	Between 4-12nm	Between 12 and 200 nm
Trawling	0-600m	No	No	No	No	Yes
CTD sonde	0-1000m	No	No	No	No	Yes
Echo sounding (hull mounted)	n.a.	No	No	No	Yes	Yes
Moored instr. (fisheries acoustics)	n.a.	No	No	No	No	No
Towed instr. (fisheries acoustics)	n.a.	No	No	No	No	No

Dated 01.12.15

NB. IF ANY DETAILS ARE MATERIALLY CHANGED REGARDING DATES/AREA OF OPERATION AFTER THIS FORM HAS BEEN SUBMITTED, THE COASTAL STATE AUTHORITIES MUST BE NOTIFIED IMMEDIATELY.



Additional information for Part B: Detail

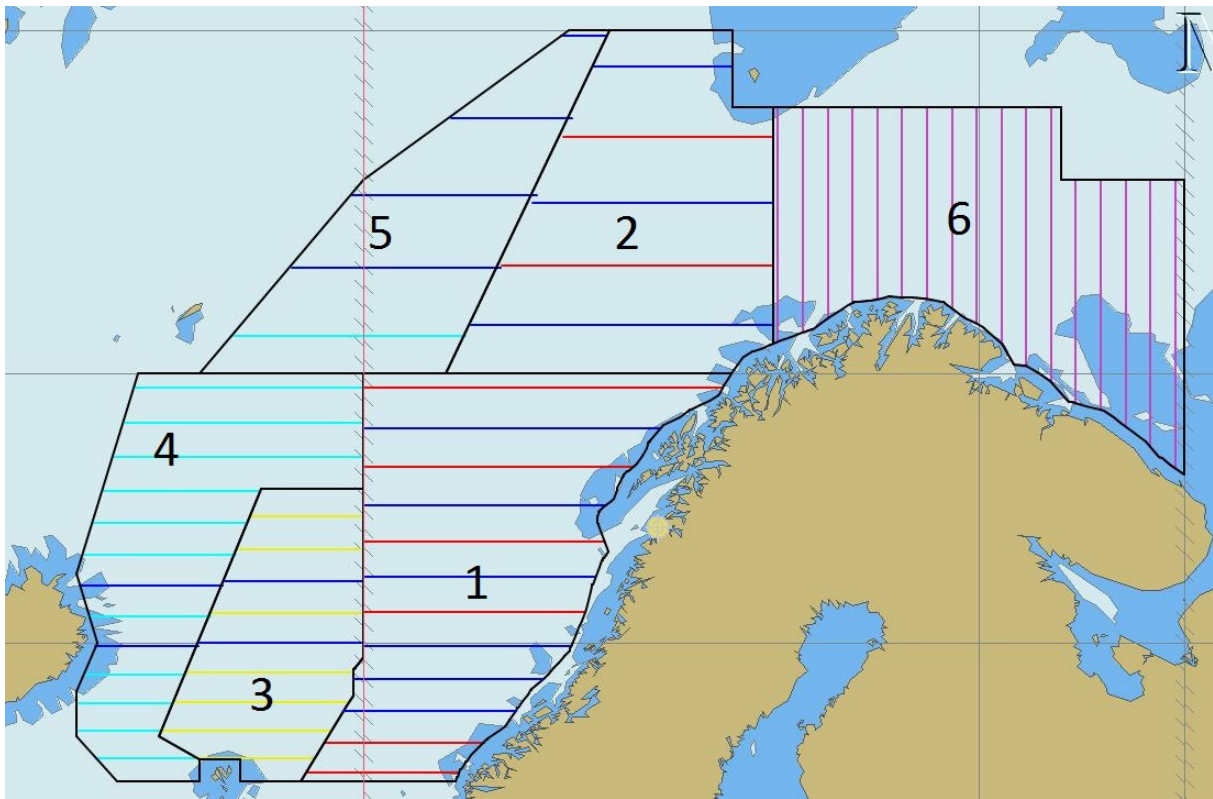
3.b) GENERAL OPERATIONAL METHODS

Echo sounding and trawling.

Pelagic trawl, circumference: 832 m  
mesh size of innernet in cod end: 22mm  
door size: 7,2 sq.m

9. NAMES AND ADDRESSES OF SCIENTISTS OF THE COASTAL STATES IN  
WHOSE WATERS THE PROPOSED CRUISE TAKES PLACE WITH WHOM  
PREVIOUS CONTACT HAS BEEN MADE

Iceland: Gudmundur J. Oskarsson  
Marine Research Institute  
Skulagata 4  
101 Reykjavik,  
Iceland



Preliminary survey tracks for the 2016 International survey in the Nordic Seas (same as the conducted survey in 2015).